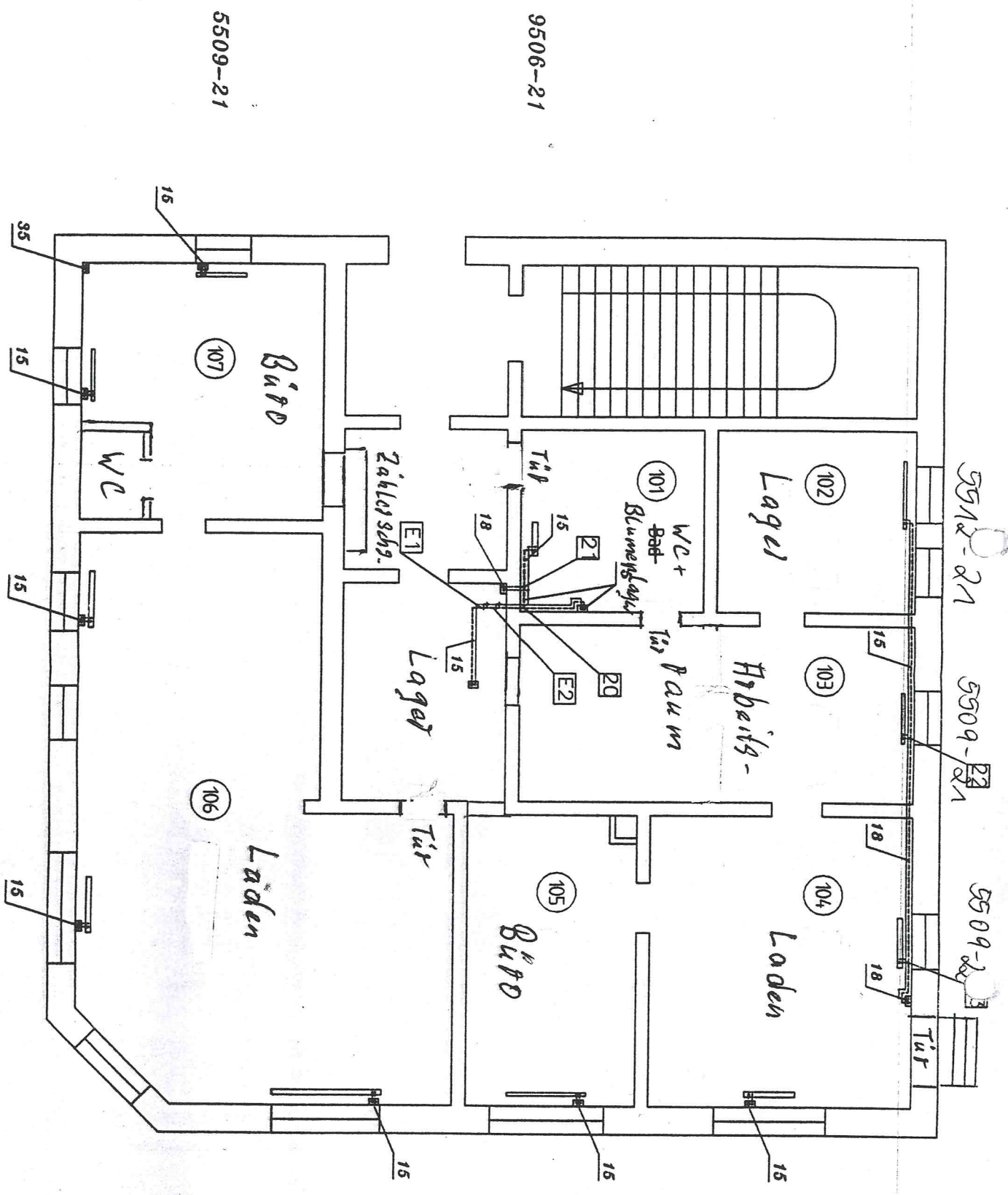


Hauptstraße "Parkplätze schräg gegenüber"

Bahnhofstr. mit 2 Parkplätzen

E 17



5510-21
5509-22
5509-22

9506-21

5509-21

5509-21

5510-22

5510-22

5509-22

5514-21

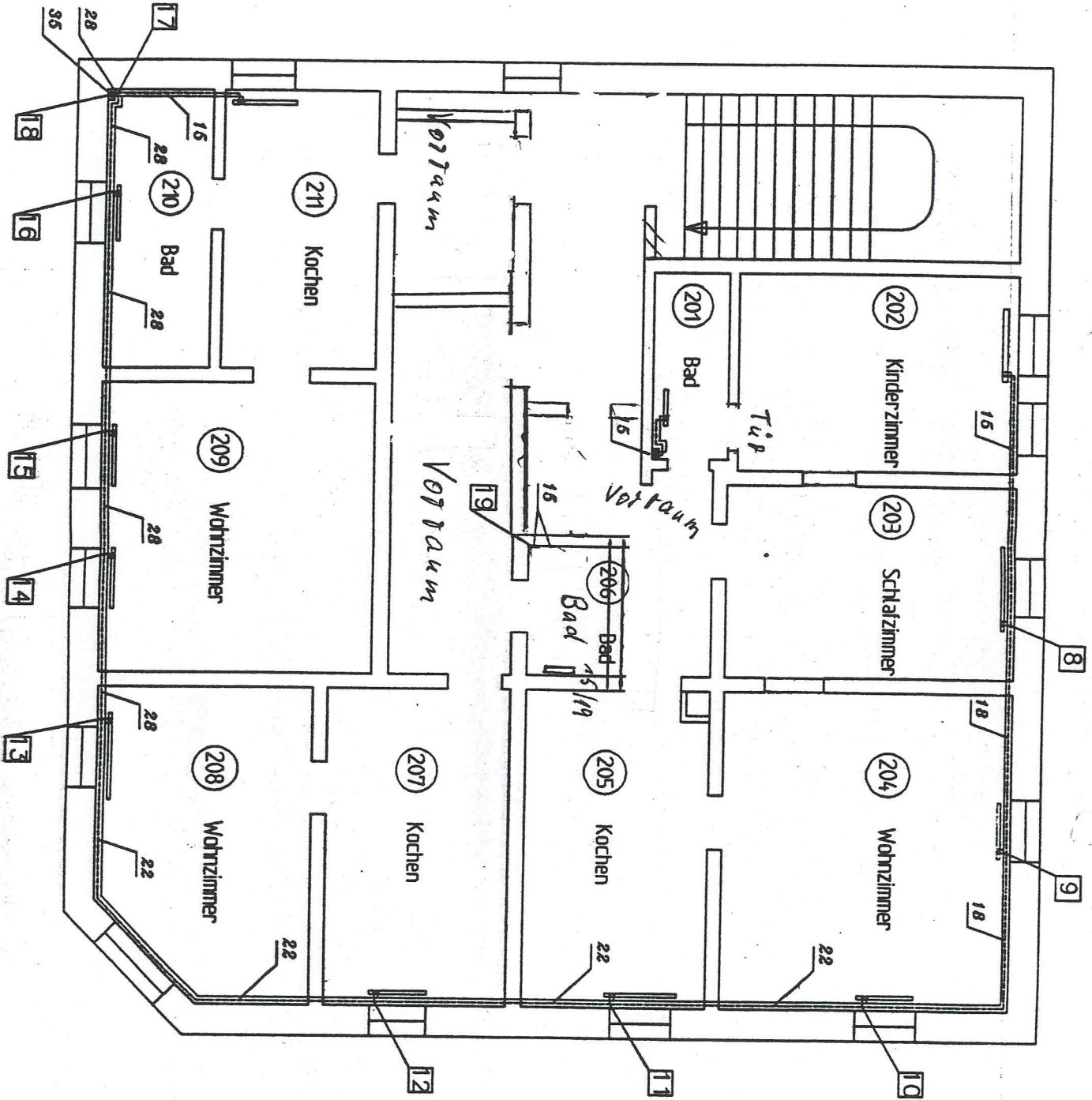
3520-22 (HK auf Standk)

1.06

5510-21

9504-20

9506-20



5509-21

5510-20 5510-20

5514-21

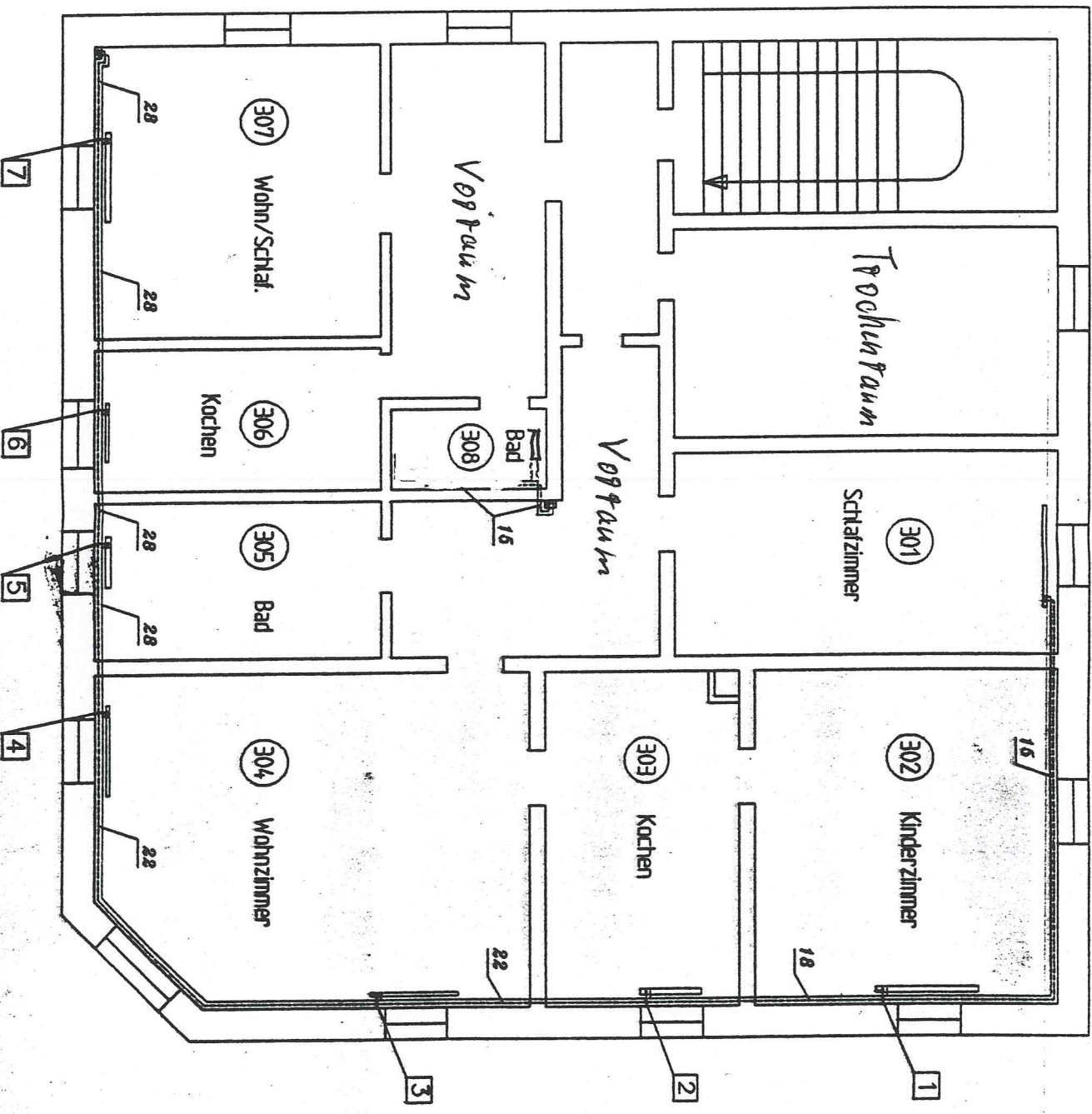
5510-21

5512-21

5509-21

9516-21

2.06



9504-20

5516-22

5510-22

5514-21

5514-22

559-21 5508-22

5514-21